



A Sysmex Group Company



IGH Probe Green

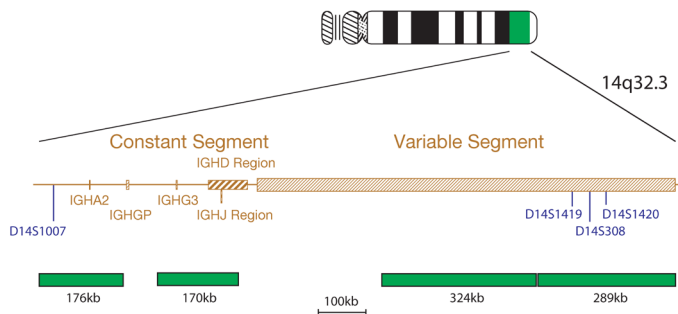
REF: LPH 568-A

Analyte Specific Reagent: Analytical and performance characteristics are not established.

Fluorescence *in situ* hybridization (FISH) is a technique that allows the visualization of DNA sequences on chromosomes. The technique uses DNA probes that hybridize to entire chromosomes or single unique sequences, and serves as a powerful adjunct to G-banded cytogenetic analysis. This technique can now be applied as an essential investigative tool within prenatal, hematological and solid tumor chromosomal analysis. Target DNA, after fixation and denaturation, is available for annealing to a similarly denatured, fluorescently labelled DNA probe, which has a complementary sequence. Following hybridization, unbound and non-specifically bound DNA probe is removed and the DNA is counterstained for visualization. Fluorescence microscopy then allows the visualization of the hybridized probe on the target material.

Probe Specification

Green, 14q32.3, Green



The IGH probe mix, labelled in green, has probes that cover parts of the Constant, J, D and Variable segments of the IGH gene.

Materials Provided


Probe: 50µl per vial

The probes are provided premixed in hybridization solution (formamide; dextran sulphate; saline-sodium citrate (SSC)) and are ready to use.

Warnings and Precautions

1. For professional use only.
2. Wear gloves when handling DNA probes.
3. Probe mixtures contain formamide, which is a teratogen; do not breathe fumes or allow skin contact. Handle with care; wear gloves and a lab coat.
4. Dispose of all hazardous materials according to your institution's guidelines for hazardous waste disposal.
5. Operators must be capable of distinguishing the colors red, blue and green.

Storage and Handling

 The kit should be stored between -25°C to -15°C in a freezer until the expiry date indicated on the kit label. The probe vial must be stored in the dark. All efforts must be made to limit exposure to light and temperature changes.

Known Cross-Reactivity

The green IGH probe may show cross-reactivity to 15q11.2 and 16p11.2.

Additional Information

For additional product information please contact the CytoCell Technical Support Department.

T: +44 (0)1223 294048

E: techsupport@cytoCELL.com

W: www.ogt.com

Labelling according to GHS-US hazard label requirements

Hazard pictograms (CLP):



GHS07



GHS08

Signal word (GHS-US): Danger

Hazardous ingredients: Formamide <100%

Hazard statements (GHS-US):

H315 – Causes skin irritation

H319 – Causes serious eye irritation

H360 – May damage fertility or the unborn child

Precautionary statements (GHS-US):

P202 – Do not handle until all safety precautions have been read and understood

P280 – Wear eye protection, protective clothing, protective gloves

P302+P352 – IF ON SKIN: Wash with plenty of soap and water

P305+P351+P338 – IF IN EYES: Rinse cautiously with water for several minutes.

Remove contact lenses, if present and easy to do. Continue rinsing

P308+P313 – IF exposed or concerned: Get medical advice/attention

P362+P364 – Take off contaminated clothing and wash it before reuse

P501 – Dispose of contents/container to hazardous or special waste collection point, in accordance with local, regional, national and/or international regulation

Refer to Safety Data Sheet for more information.

Patents and Trademarks

CytoCell is a registered trademark of CytoCell Ltd.



CytoCell Ltd.

Oxford Gene Technology,

418 Cambridge Science Park,

Milton Road,

Cambridge, CB4 0PZ, UK

T: +44(0)1223 294048

F: +44(0)1223 294986

E: probes@cytoCELL.com

W: www.ogt.com